

DISA Blast Cleaning Technology for Foundries



DISA

Looking Ahead.

DISA Blast Cleaning Technology.

DISA: 4 leaders in technology – one brand

DISA is one of the world-wide leading suppliers of equipment for surface finishing by shotblasting, in foundries and the metal working industries. Based on the know-how of Georg Fischer, BMD, Vogel & Schemmann and Goff – brands that stand for matured technology and peak reliability – DISA offers a broad spectrum of services and equipment.



Foresight – the motor of innovation

New ideas and a technological lead are decisive for success. This was true more than 100 years ago, when BMD developed the first shot-blast wheel, and applies today more than ever. Focused improvement in shot blasting techniques constitutes the core of our efforts. One of the reasons why impulses emanate again and again from us, which put their stamp on the state of the art, e.g. throughfeed and manipulator shot blast systems.

One DISA quality standard – world-wide

Technological competence, modern production media, and a unified DISA standard for all production sites and stages assure outstanding quality at all times – world-wide.



Thinking Further.

Long-term Investment Security.

Globally present – locally anchored

Our customers rightly expect us to be there for them any time and anywhere. Not only in relation to projects but, above all, regarding service. The wide international network of DISA provides for short routing, the personal consultation helps quickly and straight forwardly – especially in hotspots. We speak your language and are familiar with the local traditions.

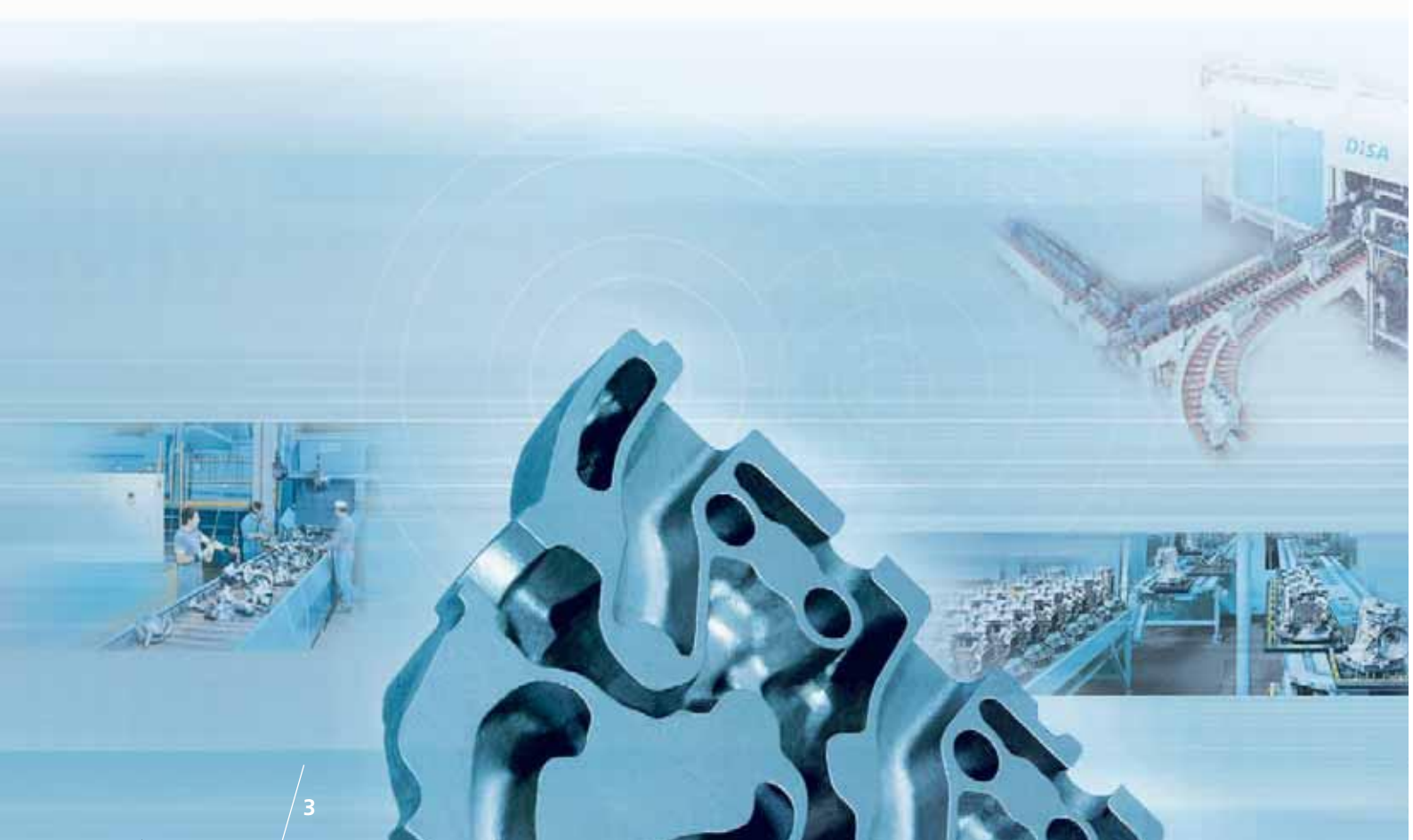


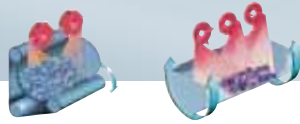
More competence through more experience

From the compact barrel machine to the customer tailored high performance plant for large series – matured solutions based on decades of experience in the branch furnish you with additional benefits and measurable advantages.

Long-term investment security

As overall supplier we can combine complementary manufacturing tasks (cleaning/fettling) and realize complete installations; interface risks are eliminated. The automation of operation sequences increases productivity and economic efficiency. Emissions are prevented or reduced. Manufacturing and logistics sequences are improved. This produces humane, safe and efficient places of work.





Batch-type Shot Blast Machines

The cost effective solution for tumble-proof castings

offer many applications for blast cleaning and handling of workpieces. Major advantages are: Its compact and simple design, well proven operating principle, high cleaning capacity, gentle tumbling to fully expose all surfaces of the workpiece, reliable removal of abrasive from internal passages. The product range consists of 3 machine type series for desanding and decoring of castings and for descaling of forgings or heat-treated workpieces:

BB Apron conveyor shot blast machines with a rubber belt, for small / medium size workpieces weighing up to 40 kg.

ST Apron conveyor shot blast machines with steel or rubber slat apron conveyor for medium and large size workpieces up to 350 kg.

DTC Batch-type shot blast machines Intensive, gentle blast cleaning at a high capacity.

A specific periphery (automatic loading/unloading) system allows the machine to be easily integrated into continuous production lines. Batch weight: 180 – 3,000 kg.



BB 680 with loader

BB shot blast machine

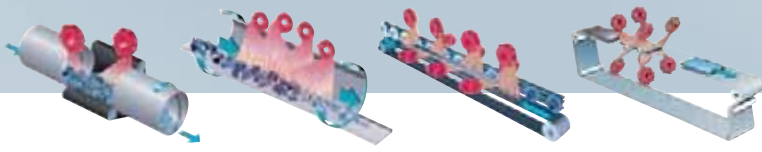


Three-barrel shot blast machines
ST28: hydraulic loading,
unloading via vibrating conveyors



Polygonal shot blast machine DTC 3





Throughfeed Shot Blast Machines

**Continuous material flow,
consistent blast cleaning quality**

Continuous shot blast machines automate production and create a more human work environment. They provide for clear-cut production processes with minimum space requirements, short transport distances without intermediate storage and thus reduce the operating costs.

CT Throughfeed shot blast machines

with endless apron conveyor and

DT Throughfeed shot blast machines

with polygonal drum are used for continuous desanding and decoring of castings and for descaling. Output: 3 – 30 t/hr.

CBC Continuous belt conveyor shot blast machines

for shock-free, individual, and process-safe blast cleaning of rotation-symmetric parts (brake discs and drums, rims, etc.), output up to 16 t/hr.

WM Wire mesh shot blast machines

Optimum process technology for blast cleaning of thin-walled and fragile castings in through-feed operation without deformation. Design concepts for iron and light metal, output 3,5 – 7,5 t/hr.



Discharge end of a CT4 shot blast machine



Loading zone of a CBC 10/30-450 shot blast machine



DT20-550 shot blast machine

Transport of uncleaned parts to a WM 1250/8 shot blast machine





Hanger-type Shot Blast Machines

Accomplishing cleaning and transport tasks at the same time

Desanding and decoring of safety critical parts (part identification tracking) and pieces susceptible to breakage or impact damage but also descaling and reconditioning in the metalworking industry, are classic applications for hanger-type shot blast machines. Transporting the workpieces on hangers opens up a great number of possibilities for an advantageous material flow allowing a functional and system-specific solution of blast cleaning and transportation of workpieces.

HT Overhead monorail shot blast machines

Basic series with 2 – 24 blast wheels for reversing or throughfeed operation. Increased performance due to series-connected modules. Hanger drive variants: manual, by chain conveyors, or automatic for loads of 2,000 – 80,000 kg.

SPH Spinner hanger shot blast machines

Shot blast machine with 2 or 3 chambers, specifically suitable for surface treatment and deburring of aluminium castings. Equipped with an industrial robot the machines can be integrated in continuous production lines.



Customized monorail with turntable switch



SPH 2

Loading and unloading with robot



HT overhead monorail shot blast machine for descaling



Shot blast machine for large castings



Manipulator Shot Blast Machines

Automatically the flexible solution
for automotive components

Manipulator blast cleaning systems meet high demands and stand out for their excellent blast cleaning effect: Even interior surfaces which are difficult to access are properly cleaned without accumulation of abrasive. The wide range of applications offer a variety of possibilities to efficiently solve different production tasks.

DS 1 Manipulator-type shot blast machine

1 manipulator, 2–4 blast wheels, loading/unloading on the front and/or rear side, output up to 90 parts/hr.

DSR 1 Robot-type shot blast machine

Output up to 70 parts/hr.

DS 4 – DS 8 Manipulator-type shot blast machines

High-performance systems with 4–8 manipulators, 4–12 blast wheels, output up to 300 parts/hr.

DV2 Manipulator-type shot blast machine

2 manipulators, 2–4 wheels, simultaneous loading/unloading and blast cleaning, up to 160 parts/hr.

CR Manipulator-type shot blast machine

High capacity and uniform production, no auxiliary process times, output up to 300 parts/hr.



DS 1-338 with loading and unloading system

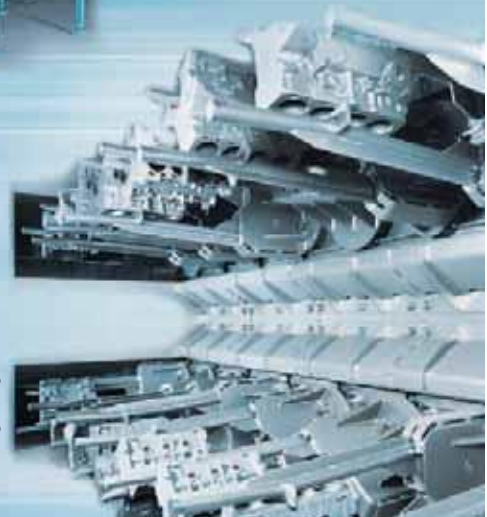


DS shot blast machine with 10-cylinder V-block

The manipulator allows clamping of different parts



Crankcase in the blast chamber of a CR shot blast machine





DISA GROUP

Founded in 1900, DISA is the world's leading supplier of foundry equipment and metal surface finishing systems.

With factories, and sales and service offices in three continents and an extensive agent network, DISA serves international industrial manufacturers, foundries and metalworking industries with leading edge technology solutions, tailored to their specific needs.

For more information please visit

www.disagroup.com

For illustrative purposes the DISA equipment may be shown without any warning labels and with some of the protective guards removed. The warning labels and guards must always be in place when the equipment is in use.

The technical data are not binding. They are not warranted characteristics and are subject to change. Please consult Conditions of Supply stipulated in the relevant quotations.

DISA Industrie AG, Switzerland,
CH-8207 Schaffhausen, Tel +41 52 631 1717,
Fax +41 52 631 4888, info.sh@disagroup.ch

DISA Industrieanlagen GmbH, Germany,
D-58099 Hagen, Tel +49 2331 965 3,
Fax +49 2331 965 521, info.hagen@disacenter.com

DISA Industrieanlagen GmbH, Germany,
D-76229 Karlsruhe, Tel +49 721 4002 0,
Fax +49 721 4002 260, info.karlsruhe@disagroup.de

DISA Industries s.r.o., Czech Republic,
Příbram I, CZ-261 01, Tel +420 318 479 111,
Fax +420 318 479 333, info.pribram@disagroup.cz

DISA Goff Inc., USA,
Seminole, OK 74818-1607, Tel +1 405 382 6900,
Fax +1 405 382 7013, disagoff@disagoff.com

DISA INDIA Ltd., India,
Bangalore 560 066, Tel +91 80 2841 3301,
Fax +91 80 2841 3315, bangalore@disaindia.com

DISA Beijing Representative Office, P.R.China,
Chaoyang District, Beijing 100022,
Tel +86 10 5869 3381/82/83, Fax +86 10 5869 3380,
disabj@disagroup.com